

### RECOMMENDED TOOLS FOR INSTALLATION



CHALK LINE



1/8" PLASTIC TILE SPACERS



RUBBER TAPPING BLOCK (T+G)

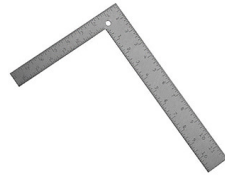


TROWEL

ACTUAL TROWEL NOT SHOWN. (Trowel is specific to adhesive type. Please follow recommendations made by each manufacturer.)



PROTECTIVE FOAM



STRAIGHT EDGE / SQUARE



RUBBER Mallet



DIAMOND TIPPED TUCK POINT BLADE

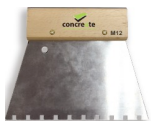
### RECOMMENDED ADHESIVE FOR INSTALLATION

**concreate®**  
concrete innovation  
CONCRETE FLOORING  
ADHESIVE:

Concreate Adhesive is a high quality, one-component, elastic floor adhesive. Recycled rubber granules give strength and elasticity and improve noise and vibration damping.



- May use:
- Trowel provided by Concreate.
  - M12 Metric Trowel
  - Custom Trowel (1/2" x 1/4" x 1/4")



#### COMPATIBLE DRITAC PRODUCTS:

- THE GOLDEN BULLET DRITAC 4141 Premium "Green" Sound/Moisture Control Urethane Flooring Adhesive
- DRITAC MOISTURE BLOCK 4-IN-1 Premium "Green" Sound/Moisture Control Urethane Flooring Adhesive



#### COMPATIBLE BOSTIK PRODUCTS:

- BOSTIK GREENFORCE Advanced Tri-Linking Adhesive & Moisture Control Membrane
- BOSTIK'S BEST Wood Flooring Urethane Adhesive and Moisture Vapor Control



### PRE-INSTALLATION PREPARATION

#### ACCLIMATIZATION OF FLOORING PLANKS

It is essential to acclimate your Concreate Flooring prior to installation. Providing that site conditions are appropriate before the panels arrive, the planks should be stored in packs prior to laying in warm dry conditions (i.e. similar to those which will prevail when the floor is laid and in use: 45 to 65% RH). The planks should be stored in the room(s) where they are to be laid for a minimum of three days to allow them to acclimate to the ambient temperature and humidity. In order to protect the product, it is recommended that the planks are kept in the packaging until installation commences. This is true for Concreate Cement, Concreate Wood and Adhesive. NOTE: Please refer to adhesive manufacturer's spec sheet for recommended temperature range for installation.

#### MOISTURE CONTENT OF CONCRETE SUBFLOOR

Concrete slabs and sand-cement screeds must be sound and dry. It is recommended that concrete subfloors be tested to meet the standards of Calcium Chloride Test (ASTM F1869 - 11) or Relative Humidity Test (ASTM F2170 - 11). Sub-floors at ground level or below must contain an effective moisture membrane to protect flooring from ground water in compliance with U.S. standards. If there is any doubt that the sub-floor meets the required standard for moisture or the sub-floor does not have an effective integral moisture membrane, a suitable surface applied moisture membrane must be installed.

Wooden sub-floors must not be more than 2% higher in moisture than the Concreate-Wood Flooring. When installing Concreate Wood flooring at ground floor level (or below) above a ventilated cavity (e.g. floorboards suspended on joist), it is essential that a moisture barrier building paper is installed over the sub-floor before flooring can be installed. The moisture barrier must be applied up the walls by 1-3/16" at the perimeter, and all joints overlapped by a minimum 8" and taped with a water proof joint tape.

Failure to comply with the requirements for sub-floor moisture may result in cupping and excessive expansion of the Concreate Wood Panel which is not covered by Concreate warranty.

**PRE-INSTALLATION PREPARATION (CONTINUED)**

**LEVELING REQUIREMENTS**

- The flatness tolerance for installation is the normal industry standard of 1/8" within a radius of 10 feet. Failure to maintain these tolerances may result in deflection, which may produce undue stress on the joints causing gaps between flooring elements. With fully bonded floors, this may result in inadequate contact between flooring and adhesive.
- If leveling is required over wood based, sand-cement screed or concrete sub-floors, it is recommended that a rapid curing high strength, water-powder mix, cement based leveling compound is utilized to meet the leveling requirements.

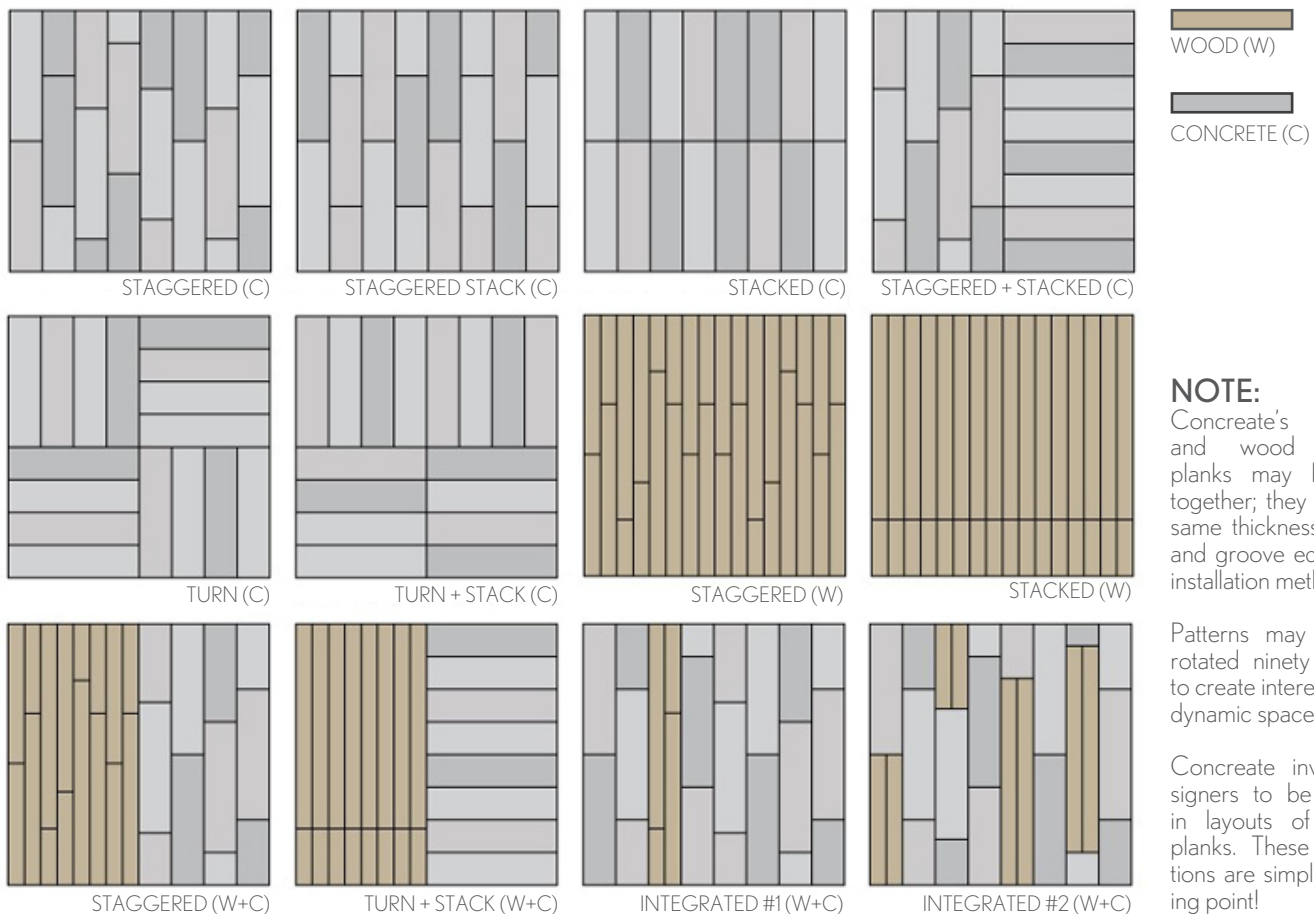
**CLEANING**

- Concreate flooring planks must be installed over a floor that has been vacuum cleaned and is completely dust-free. Failure to properly clean the surface may inhibit the adhesive from properly adhering, causing the planks to shift.

**PRE-INSTALLATION CONSIDERATIONS**

**SUGGESTED PATTERNS FOR INSTALLATION**

Due to precision of certain joints and alignments, some patterns may take longer to install. This may have an impact on the overall installation time (depending on the size of the job) and should be considered in the pricing of the installation.



**NOTE:**  
Concreate's concrete and wood flooring planks may be used together; they have the same thickness, tongue and groove edges, and installation methods.

Patterns may also be rotated ninety degrees to create interesting and dynamic spaces.

Concreate invites designers to be creative in layouts of flooring planks. These suggestions are simply a starting point!

**Consistently Inconsistent:**

Concreate is a natural surface with tonal and color variation. To achieve the desired mix of colors, shades and other characteristics in the final floor, and avoid clusters of similar color shades, the contents of multiple packs should be mixed during installation. Samples must be taken as a guide only and color/shade and other characteristics will vary. Before installation commences rack out a small section of boards for the client approval. This product may include up to 3-5% of boards which do not meet the usual tolerances or grade, which should be defect cut or set aside as waste.

**INSTALLATION INSTRUCTIONS**



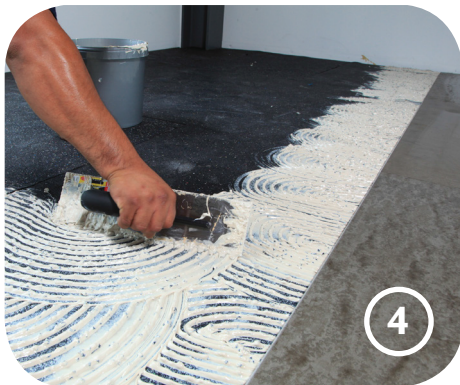
1

**STEP-BY-STEP FLOORING PLANK INSTALLATION:**

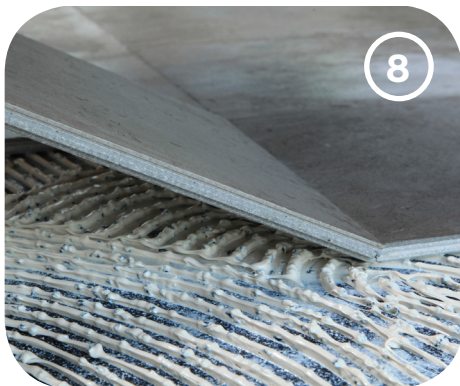
NOTE: Before Concreate flooring can be delivered to the job site, all wet trades (e.g. concrete, plastering, and decorating) must be finished and the building must be weather tight and thoroughly dried out.

**\*\*The installer is the last line of quality control.  
DO NOT INSTALL BOARDS WITH OBVIOUS DEFECTS.\*\***

1. OPEN PACKAGES  
(Take care not to damage tongue and groove.)
2. LAYOUT / COMPOSITION OF INDIVIDUAL PLANKS  
(Refer to pre-installation considerations section of these guidelines)
3. SNAP POINTS FOR LAYOUT AND SELECT STARTING POINT FOR LAYOUT
4. POUR ADHESIVE AND SPREAD WITH TROWEL  
(Note: when using concrete flooring adhesive, one can estimate coverage at approximately 100 square feet per each 4 gallon pail when using the appropriate trowel. For all other adhesives, contact manufacturer for trowel and coverage information.)
5. PLACE SPACERS AGAINST WALL / SURFACE  
(Spacers shall be placed such that a minimum of 1/8" gap is left at all edges.)
6. PLACE CONCREATE FLOORING PLANK
7. REPOSITION SPACERS EVENLY ALONG THE WALL / SURFACE THAT THE PLANK WILL BE FITTED AGAINST.
8. SLIDE / MOVE PLANK INTO POSITION AGAINST SPACERS OR ADJACENT PLANKS.
9. REPEAT STEPS WITH SUBSEQUENT PLANKS, MAKING SURE TO BE CAREFUL WITH THE T&G EDGES.  
(Use rubber mallet and specialized tongue and groove rubber tapping blocks to maneuver planks into proper and tight fitment with one another.)
10. CUT / TRIM PIECES TO FIT INSTALLATION LEAVING 1/8" GAP AT ALL EDGES FOR MOVEMENT.



4



8



9

**Installation Tips:**

Although it is very unlikely that Concreate Flooring will expand, it is recommended that expansion spaces of 1/8" or more must be left wherever Concreate Flooring meets obstructions; including all walls, door frames, thresholds, structural support, fireplaces, etc. These expansion gaps may be filled with color coordinated caulk and/or the use of a baseboard.

When installing flooring, uplift occasional planks after placement and examine the residues of adhesive on the underside of the plank to ensure the plank is fully bonded to the sub-floor. **DO NOT APPLY TAPE DIRECTLY TO THE SURFACE.** Applying tape of any kind directly onto Concreate surface will result in damage to the finish. To protect the surface from trade traffic during construction, use cardboard secured in place with sand bags. Damage caused by tape application is not covered in our warranty.



**COMPLETED INSTALLATION**



**SAFETY RECOMMENDATIONS**



**Cutting Concrete Flooring Planks:**

Concrete flooring planks (concrete) must be cut with a dry saw. It is recommended that any power activated tools be connected to an appropriate dust evacuation system when cutting.

When cutting Concrete flooring planks around intricate or detailed objects, a jigsaw or other small hand-held cutting devices may be employed as long as the bit/blade is diamond tipped and intended for use with concrete. Always secure plank to working surface prior to making detailed cuts.

Proper Personal Protective Equipment (PPE) must be worn at all times to protect from injury during installation of this product. Personal Protective Equipment (PPE) includes, but is not limited to the following: hard hat, eye protection, ear protection, respiratory protection and work gloves.

**CARING FOR YOUR CONCRETE FLOOR**

**POST INSTALLATION CARE**

Please see Care and Maintenance Guidelines for the proper way to care for your new Concreate floor.

**CONTACT INFORMATION**

**Concreate Headquarters:**  
11730 E Holly Ave Ste 728  
El Segundo, CA 90245

+1 855.265.2116  
[www.concreate.net](http://www.concreate.net)  
info@concreate.net

DEALER IMPRINT AND SUBMITTAL STAMPS

© © 2015, Concreate LLC. Issued 2016-10, subject to change. Disclaimer: This information only a general guide and is not intended to be exhaustive. It is for use by qualified design and construction professionals only. Further information is available upon request. Concreate does not manufacture installation products or tile cleaning/maintenance products. Concreate provides the information contained herein to its customers as an information source only. The products identified in this website may have chemicals that cause reactions in certain individuals. Concreate strongly recommends the use of safety glasses, respirators (masks) and gloves in handling any materials that contain chemicals.